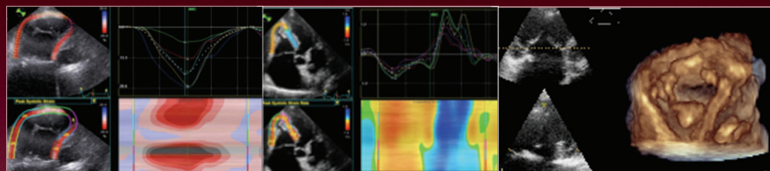




**SCIENTIFIC ASSOCIATION OF THE
ONASSIS CARDIAC SURGERY CENTER
DEPARTMENT OF NONINVASIVE DIAGNOSTICS
CARDIOLOGY SECTION**

Under the Auspices of the Hellenic Cardiological Society

**17th SYMPOSIUM
on ECHOCARDIOLOGY**



**October 7 - 8, 2016
Eugenides Foundation
(Ἴδρυμα Ευγενίδου)
Athens-Greece**

Organizing Committee

G. Athanassopoulos

G. Karatasakis

S. Kyrzopoulos

D. Tsiapras

GENERAL INFORMATION

Date

From Friday 7 of October 2016
to Saturday 8 of October 2016

Congress Venue

Eugenides Foundation

387, Sygrou Ave.

Kallithea

Athens-Greece

Organization

Noninvasive Cardiology Diagnostic
Department/Cardiology Section

Scientific Association of the Onassis
Cardiac Surgery Center

Language

The official congress language are
both English and Greek

Presentations by P/C

The auditorium will be equipped with
video projector for presentations via
P/C. The material must be delivered
at least one hour before the lecture to
the Presentation's Secretariat.

Registrations

FREE

Certification

After the end of the congress a
certificate of attendance will be given
providing a minimum attendance
time.

Site

<http://www.onasseio.gr>

Secretariat:

Phaedra Constantinidou

Onassis Cardiac Surgery Center

356, Sygrou, 17674 Athens

Tel: 210-9493341, Fax: 210-9493336, email: akard@ocsc.gr

Invited Faculty

ADAMOPOULOS S.	Athens, GR	LAKOUMENTA S.	Athens, GR
AGGELI K.	Athens, GR	LAMBROPOULOS K.	Athens, GR
ANAGNOSTOU E.	Thessaloniki, GR	MARGETIS P.	Levadia, GR
ANASTASAKIS A.	Athens, GR	MASTORAKOU R.	Athens, GR
ANTONIOU F.	Athens, GR	MATZARAKI V.	Athens, GR
ANTZAKA CH.	Athens, GR	MAOUNIS TH.	Athens, GR
ATHANASSOPOULOS G.	Athens, GR	NIHOYANNOPOULOS P.	London, UK
BALANIKA M.	Athens, GR	OLYMPIOS Ch.	Athens, GR
BARBETSEAS I.	Athens, GR	PAMBOUKAS C.	Athens, GR
BELDEKOS D.	Piraeus, GR	PAPADOPOULOS C.	Athens, GR
BRILI S.	Athens, GR	PARTHENAKIS F.	Crete, GR
CHRYSSOS D.	Tripoli, GR	PATRIANAKOS A.	Crete, GR
COKKINOS DV.	Athens, GR	PATSOURAS D.	Ioannina, GR
DEMEROUTI E.	Athens, GR	PERREAS C.	Athens, GR
FOUSSAS S.	Piraeus, GR	POLYMEROS S.	Athens, GR
FRAGOULIS S.	Athens, GR	POULOS G.	Athens, GR
FROGOUDAKI A.	Athens, GR	RELLIA P.	Athens, GR
GKOUZIOUTA A.	Athens, GR	SKLAVENAS I.	Athens, GR
HATZIGEORGIOU G.	Athens, GR	SMYRLI A.	Athens, GR
IAKOVOU I.	Athens, GR	SPARGIAS C.	Athens, GR
IKONOMIDES I.	Athens, GR	STAVRIDIS G.	Athens, GR
KABANAROU S.	Athens, GR	STEFANIDIS A.	Piraeus, GR
KALKANDI E.	Athens, GR	THEODORAKIS G.	Athens, GR
KALYVAS P.	Athens, GR	THEODOSIS-GEORGILAS A.	Athens, GR
KARABINOS E.	Athens, GR	THOMOPOULOU S.	Athens, GR
KARAGIANNIS S.	Athens, GR	TOUSOULIS D.	Athens, GR
KARATASAKIS G.	Athens, GR	TSIAPRAS D.	Athens, GR
KHOURY M.	Athens, GR	TSIOUFIS C.	Athens, GR
KOGERAKIS N.	Athens, GR	TZEIS S.	Athens, GR
KOUNAS S.	Athens, GR	VARTELA V.	Athens, GR
KOURIS N.	Athens, GR	VLASSEROS J.	Athens, GR
KOUTSOGIANNIS N.	Patra, GR	VOUDRIS V.	Athens, GR
KRANIDIS A.	Athens, GR	VOURNAS E.	Athens, GR
KYRZOPOULOS S.	Athens, GR	YIANGOU K.	Nicosia, CY

Friday OCTOBER 7 2016

Aortic Stenosis, as a Pathophysiologic Entity

Chairpersons: D. Cokkinos, S. Foussas

- 09.00-09.20 Mechanisms of the disease progression
S. Thomopoulou
- 09.20-09.40 Clinical course vs pathophysiology
A. Theodosis-Georgilas
- 09.40-10.00 How to approach the patient: Symptomatic vs asymptomatic
A. Stefanidis
- 10.00-10.20 Understanding the pathophysiology of the disease
E. Anagnostou
- 10.20-10.30 Discussants: *K. Lambropoulos, P. Mastorakou, C. Pamboukas*

The Clinical Subsets of Aortic Stenosis

Chairpersons: V. Vlasseros, V. Voudris

- 10.30-10.50 Normal flow high gradient Aortic Stenosis. Is it the main stream?
G. Karatasakis
- 11.50-11.10 Low ejection fraction - low flow - low gradient severe Aortic Stenosis: The end of the road?
E. Karabinos
- 11.10-11.30 Ethical questions with Aortic Stenosis, TAVI and scores
I. Iakovou
- 11.30-11.50 Normal ejection fraction - low gradient severe Aortic Stenosis: What does it mean
S. Kyrzopoulos
- 11.50-12.00 Discussants: *I. Sklavenas, A. Smyrli, S. Thomopoulou*
- 12.00-12.30 Coffee Break

Friday OCTOBER 7 2016

Other Forms of Left Ventricular Outflow Tract Obstruction

Chairpersons: S. Kyrzopoulos, C. Perreas

- 12.30-12.50 Fixed subvalvular Aortic stenosis: Diagnostic tips
I. Ikonomidis
- 12.50-13.10 Dynamic subaortic obstruction: Is it synonymous
with HOCM?
A. Patrianakos
- 13.10-13.30 Prosthetic aortic valve dysfunction: How to avoid
overdiagnosis
D. Patsouras
- 13.30-13.50 Supravalvular aortic stenosis. A forgotten disease?
E. Demerouti
- 13.50-14.00 Discussants: *A. Frogoudaki, E. Kalkandi*
- 14.00-15.00 Light Lunch

Interactive Session: Clinical Cases

Chairpersons: P. Nihoyannopoulos, D. Tousoulis

- 15.00-16.00 3 cases
A. Patrianakos
- 16.00-16.15 Discussants: *M. Balanika, I. Barbetseas*
- 16.15-17.15 3 cases
D. Patsouras
- 17.15-17.30 Discussants: *D. Chryssos, Ch. Olympios*

Friday OCTOBER 7 2016

Echocardiography in Atrial Fibrillation

Chairpersons: S. Tzeis, F. Parthenakis

- 17.30-17.50 Evaluating the atrial size from diameter to volume
V. Vartela
- 17.50-18.10 Thromboembolism and anticoagulation: The new therapeutic options
D. Tsiapras
- 18.10-18.30 Minimizing the risk of embolism post cardioversion
C. Papadopoulos
- 18.30-18.40 Is there any indication for TEE in patients with adequate anticoagulation?
Th. Maounis
- 18.40-19.00 Discussants: *A. Kranidis, G. Poulos, P. Rellia*

Saturday OCTOBER 8 2016

Aortic Valve Disease + Aortopathy

Chairpersons: D. Beldekos, M. Khoury

- 09.00-09.20 New insights concerning family screening in bicuspid aortopathy
S. Karagiannis
- 09.20-09.40 Distinguishing post - stenotic dilatation - bicuspid aortopathy
K. Aggeli

Saturday OCTOBER 8 2016

- 09.40-10.00 Dissection: Safety of diagnostic procedures revised
N.Koutsogiannis
- 10.00-10.20 Atheromatous Aorta and thrombi: a hazardous combination
E. Vournas
- 10.20-10.30 Discussants: ***F. Antoniou, S. Fragoulis, S. Kabanarou, S. Polymeros***

The asymptomatic patient

Chairpersons: S. Adamopoulos, S. Lakoumenta

- 10.30-10.50 Hypertrophic cardiomyopathy. Risk stratification in asymptomatic patients and screening of first degree relatives
A. Anastasakis
- 10.50-11.10 Diagnostic algorithms in asymptomatic valvular heart disease
K. Yiangou
- 11.10-11.30 Competitive athletes
A. Frogoudaki
- 11.30-11.50 Role of echo in coronary artery disease: Discovering subclinical ischemia
G. Athanassopoulos
- 11.50-12.00 Discussants: ***A. Gkouziouta***
- 12.00-12.30 Coffee Break

Saturday OCTOBER 8 2016

Mitral Regurgitation: A Very Complex Lesion

Chairpersons: G. Karatasakis, G. Stavridis

- | | |
|-------------|--|
| 12.30-12.50 | Functional mitral regurgitation
<i>G. Hatzigeorgiou</i> |
| 12.50-13.10 | Organic mitral regurgitation
<i>P. Kalyvas</i> |
| 13.10-13.30 | Mechanisms of Mitral regurgitation: The role of the annulus in primary and secondary regurgitation
<i>C. Spargias</i> |
| 13.30-13.50 | Repairability of mitral regurgitation
<i>N. Kogerakis</i> |
| 13.50-14.00 | Discussants: <i>Ch. Antzaka, P. Margetis, V. Matzaraki</i> |

Clinical Cases Coordinated by the Working Group of Echocardiography of the Hellenic Society of Cardiology

Chairpersons: N. Kouris, G. Theodorakis, C. Tsioufis

- | | |
|-------------|---|
| 14.00-15.30 | TOPICS
1. Valvular heart disease
2. Coronary artery disease
3. Pulmonary hypertension

Discussants: <i>S. Brill, S. Kounas</i> |
| 15.30 | Closing Remarks |